

535 NORTH BRAND BOULEVARD GLENDALE, CALIFORNIA



FOR MORE INFORMATION PLEASE CONTACT:

Matthew Heyn
Lic. 01306148
matt.heyne@cbre.com
818.907.4619

Troy Poller
Lic. 01830817
troy.poller@cbre.com
818.907.4620

Natalie Bazarevitsch
Lic. 01188604
natalie.bazarevitsch@cbre.com
818.502.6723

Kevin Duffy
Lic. 01032613
kevin.duffy@cbre.com
818.502.6724

535 NORTH BRAND BOULEVARD GLENDALE, CALIFORNIA

AVAILABILITIES

230	±219	\$2.50 FSG / RSF / Mo	Immediately	Mini-suite. Includes access to second floor conference room and kitchen.
240	±188	\$2.50 FSG / RSF / Mo	Immediately	Mini-suite. Includes access to second floor conference room and kitchen.
245	±158	\$2.50 FSG / RSF / Mo	Immediately	Mini-suite. Includes access to second floor conference room and kitchen.
250	±358	\$2.75 FSG / RSF / Mo	Immediately	Mini-suite. Includes access to second floor conference room and kitchen.
255	±557	\$2.75 FSG / RSF / Mo	Immediately	Mini-suite. Includes access to second floor conference room and kitchen.
265	±197	\$2.75 FSG / RSF / Mo	Immediately	Mini-suite. Includes access to second floor conference room and kitchen.
260	±241	\$2.75 FSG / RSF / Mo	Immediately	Mini-suite. Includes access to second floor conference room and kitchen.
300	±8,442	\$2.40 FSG / RSF / Mo	Immediately	Full floor opportunity.
450	±4,661	\$2.40 FSG / RSF / Mo	Immediately	Elevator lobby identity. Divisible to ±3,000 RSF.
501*	±1,844	\$2.40 FSG / RSF / Mo	Immediately	Elevator lobby identity. Perimeter private offices with reception area. Contiguous to 4,550 RSF.
502	±1,098	\$2.40 FSG / RSF / Mo	Immediately	2 window offices, open area, kitchen
510*	±2,706	\$2.40 FSG / RSF / Mo	Immediately	Flexible layout with reception area, kitchen and great window line. Contiguous to 4,550 RSF.
800**	±3,345	\$2.40 FSG / RSF / Mo	10/1/16	6 window offices, corner conference room, kitchen, copy room, storage room and open area. Contiguous to 8,525 RSF.
850**	±2,071	\$2.40 FSG / RSF / Mo	Immediately	Perimeter private offices with reception area, conference room and kitchen. Contiguous to 8,525 RSF.
880**	±3,109	\$2.40 FSG / RSF / Mo	3/1/16	7 window offices, window conference room, reception area, double door entry, kitchen, storage room and open area. Contiguous to 8,525 SF.

*Contiguous to 4,550 RSF

**Contiguous to 8,525 RSF

FEATURES

- Walking distance to numerous restaurants, theatres, hotels and retail shops
- Convenient MTA and city shuttle stops in front of the building
- Efficient ±8,400 rentable square foot floor plates
- Convenient access to the 134, 5 and 2 freeways
- Minutes from the Burbank airport
- Panoramic views with high perimeter glass
- On-site management
- Parking: \$85 unreserved per stall per month
\$125 reserved per stall per month
\$65 tandem per stall per month

FOR MORE
INFORMATION
PLEASE CONTACT:

CBRE

Equity Office

Matthew Heyn
Lic. 01306148
matt.heyne@cbre.com
818.907.4619

Troy Pollet
Lic. 01830817
troy.pollet@cbre.com
818.907.4620

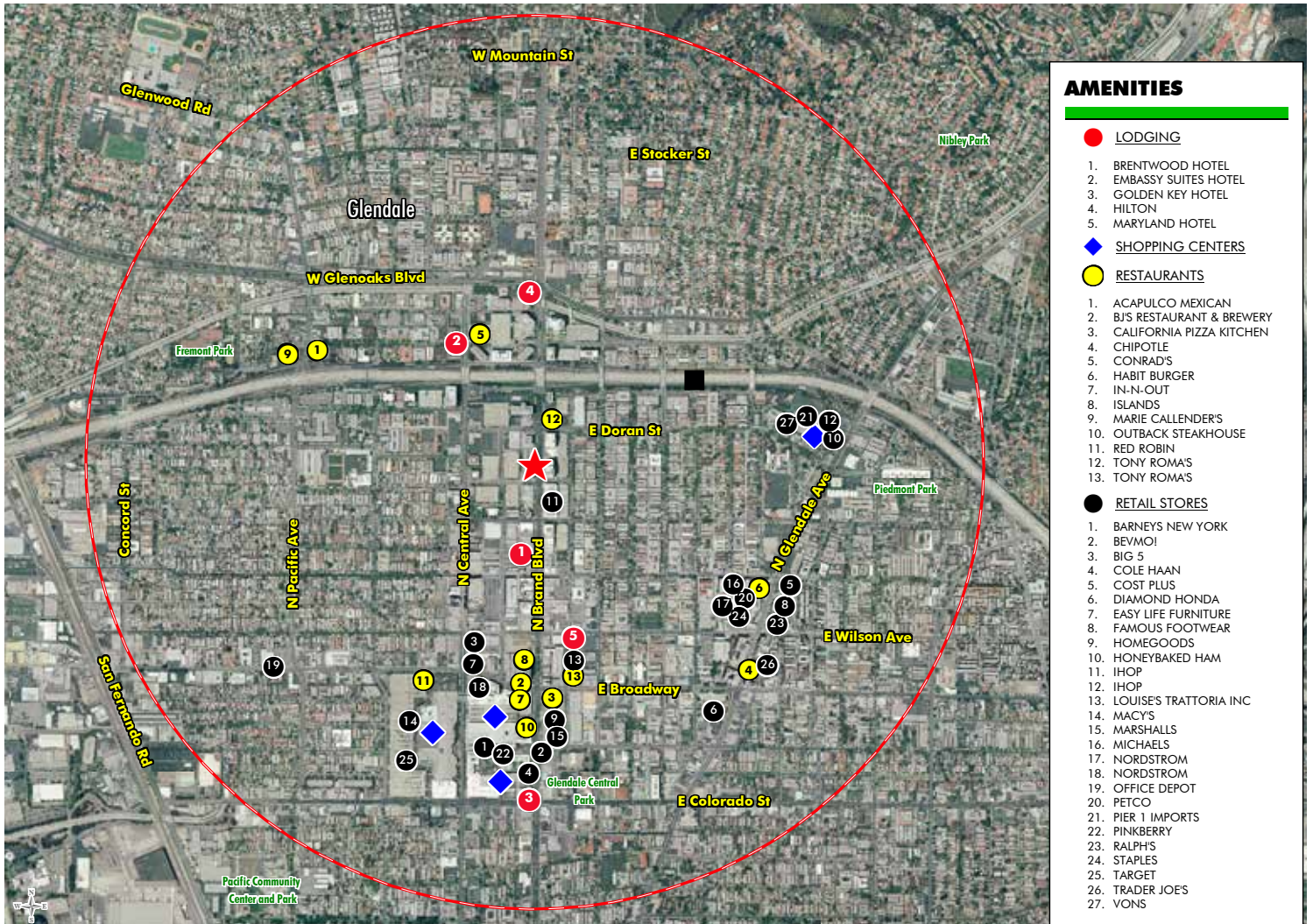
Natalie Bazarevitch
Lic. 01188604
natalie.bazarevitch@cbre.com
818.502.6723

Kevin Duffy
Lic. 01032613
kevin.duffy@cbre.com
818.502.6724

© 2015 CBRE, Inc. This information has been obtained from sources believed reliable. We have not verified it and make no guarantee, warranty or representation about it. Any projections, opinions, assumptions or estimates used are for example only and do not represent the current or future performance of the property. You and your advisors should conduct a careful, independent investigation of the property to determine to your satisfaction the suitability of the property for your needs.

535 NORTH BRAND BOULEVARD GLENDALE, CALIFORNIA

AMENITIES MAP



AMENITIES

● LODGING

1. BRENTWOOD HOTEL
2. EMBASSY SUITES HOTEL
3. GOLDEN KEY HOTEL
4. HILTON
5. MARYLAND HOTEL

◆ SHOPPING CENTERS

● RESTAURANTS

1. ACAPULCO MEXICAN
2. BJS RESTAURANT & BREWERY
3. CALIFORNIA PIZZA KITCHEN
4. CHIPOTLE
5. CONRAD'S
6. HABIT BURGER
7. IN-N-OUT
8. ISLANDS
9. MARIE CALLENDER'S
10. OUTBACK STEAKHOUSE
11. RED ROBIN
12. TONY ROMA'S
13. TONY ROMA'S

● RETAIL STORES

1. BARNEYS NEW YORK
2. BEVMOI
3. BIG 5
4. COLE HAAN
5. COST PLUS
6. DIAMOND HONDA
7. EASY LIFE FURNITURE
8. FAMOUS FOOTWEAR
9. HOMETOOLS
10. HONEYBAKED HAM
11. IHOP
12. IHOP
13. LOUISE'S TRATTORIA INC
14. MACYS
15. MARSHALLS
16. MICHAELS
17. NORDSTROM
18. NORDSTROM
19. OFFICE DEPOT
20. PETCO
21. PIER 1 IMPORTS
22. PINKBERRY
23. RALPH'S
24. STAPLES
25. TARGET
26. TRADER JOE'S
27. VONS

FOR MORE
INFORMATION
PLEASE CONTACT:

CBRE

Equity Office

Matthew Heyn
Lic. 01306148
matt.heyne@cbre.com
818.907.4619

Troy Pollet
Lic. 01830817
troy.pollet@cbre.com
818.907.4620

Natalie Bazarevitch
Lic. 01188604
natalie.bazarevitch@cbre.com
818.502.6723

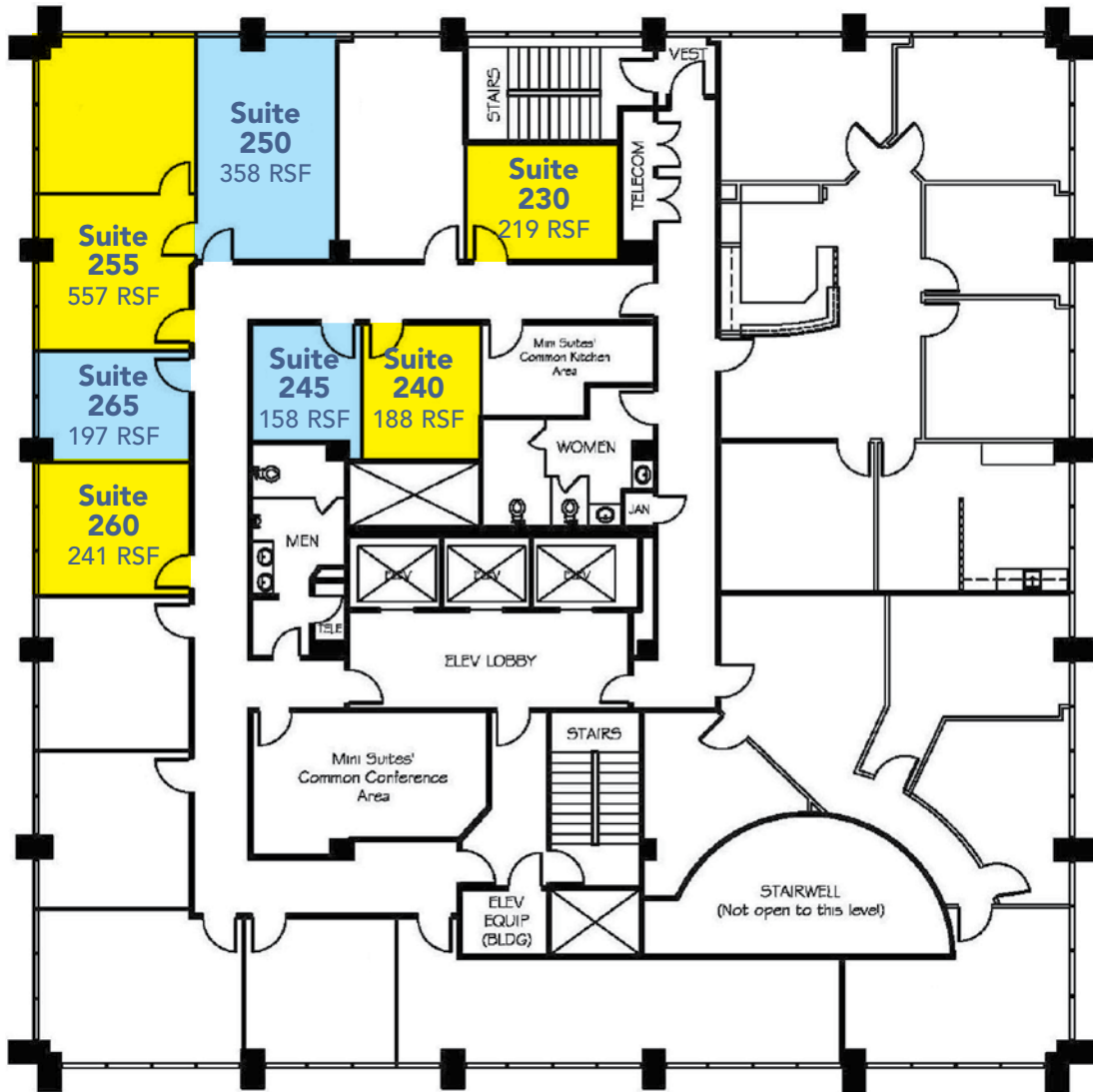
Kevin Duffy
Lic. 01032613
kevin.duffy@cbre.com
818.502.6724

© 2015 CBRE, Inc. This information has been obtained from sources believed reliable. We have not verified it and make no guarantee, warranty or representation about it. Any projections, opinions, assumptions or estimates used are for example only and do not represent the current or future performance of the property. You and your advisors should conduct a careful, independent investigation of the property to determine to your satisfaction the suitability of the property for your needs.

535 NORTH BRAND BOULEVARD GLENDALE, CALIFORNIA

2ND FLOOR

Available: Immediately



■ ■ AVAILABLE SUITES

FOR MORE
INFORMATION
PLEASE CONTACT:

CBRE

Equity Office

Matthew Heyn
Lic. 01306148
matt.heyn@cbre.com
818.907.4619

Troy Pollet
Lic. 01830817
troy.pollet@cbre.com
818.907.4620

Natalie Bazarevitsch
Lic. 01188604
natalie.bazarevitsch@cbre.com
818.502.6723

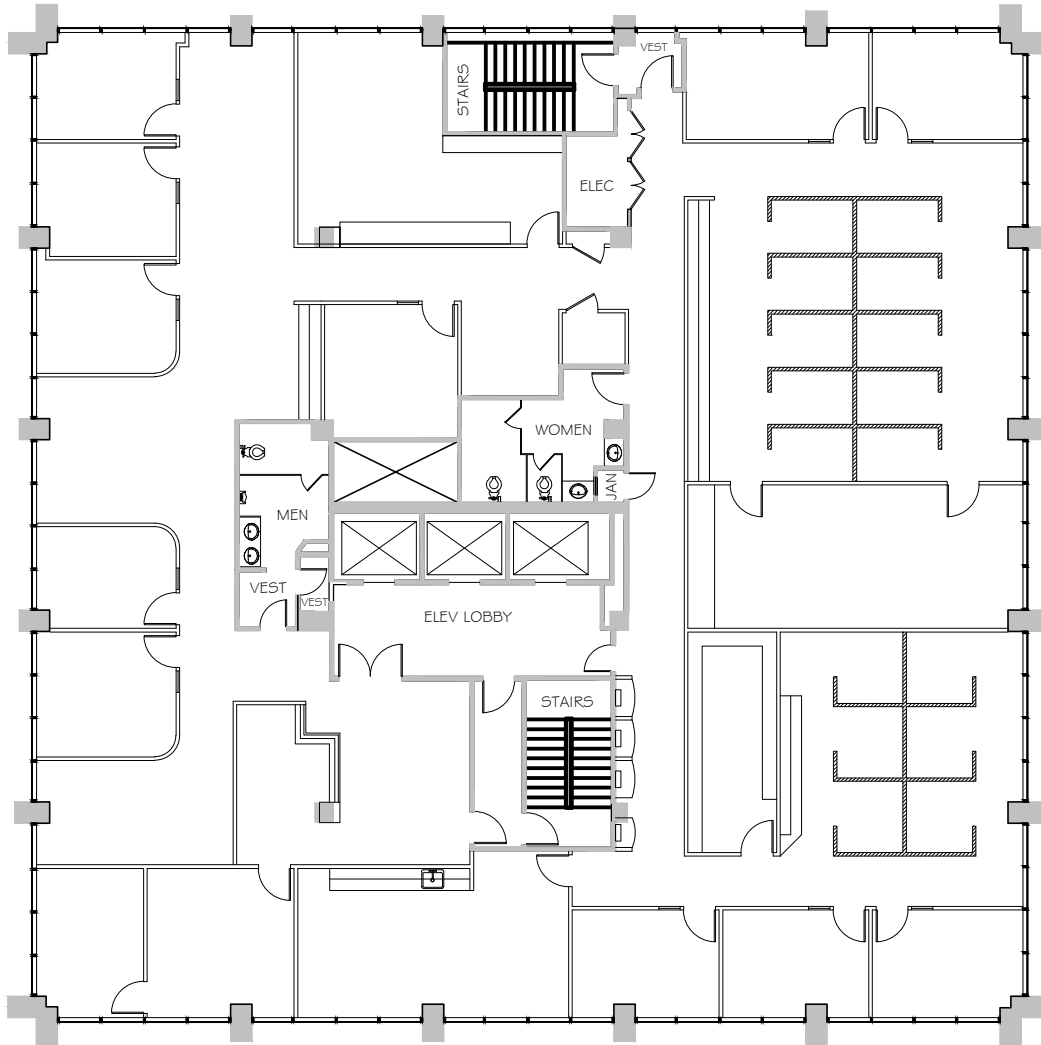
Kevin Duffy
Lic. 01032613
kevin.duffy@cbre.com
818.502.6724

© 2015 CBRE, Inc. This information has been obtained from sources believed reliable. We have not verified it and make no guarantee, warranty or representation about it. Any projections, opinions, assumptions or estimates used are for example only and do not represent the current or future performance of the property. You and your advisors should conduct a careful, independent investigation of the property to determine to your satisfaction the suitability of the property for your needs.

535 NORTH BRAND BOULEVARD GLENDALE, CALIFORNIA

SUITE 300 • ±8,442 RSF

Available: Immediately



FOR MORE
INFORMATION
PLEASE CONTACT:

CBRE

Equity Office

Matthew Heyn
Lic. 01306148
matt.heyn@cbre.com
818.907.4619

Troy Pollet
Lic. 01830817
troy.pollet@cbre.com
818.907.4620

Natalie Bazarevitsch
Lic. 01188604
natalie.bazarevitsch@cbre.com
818.502.6723

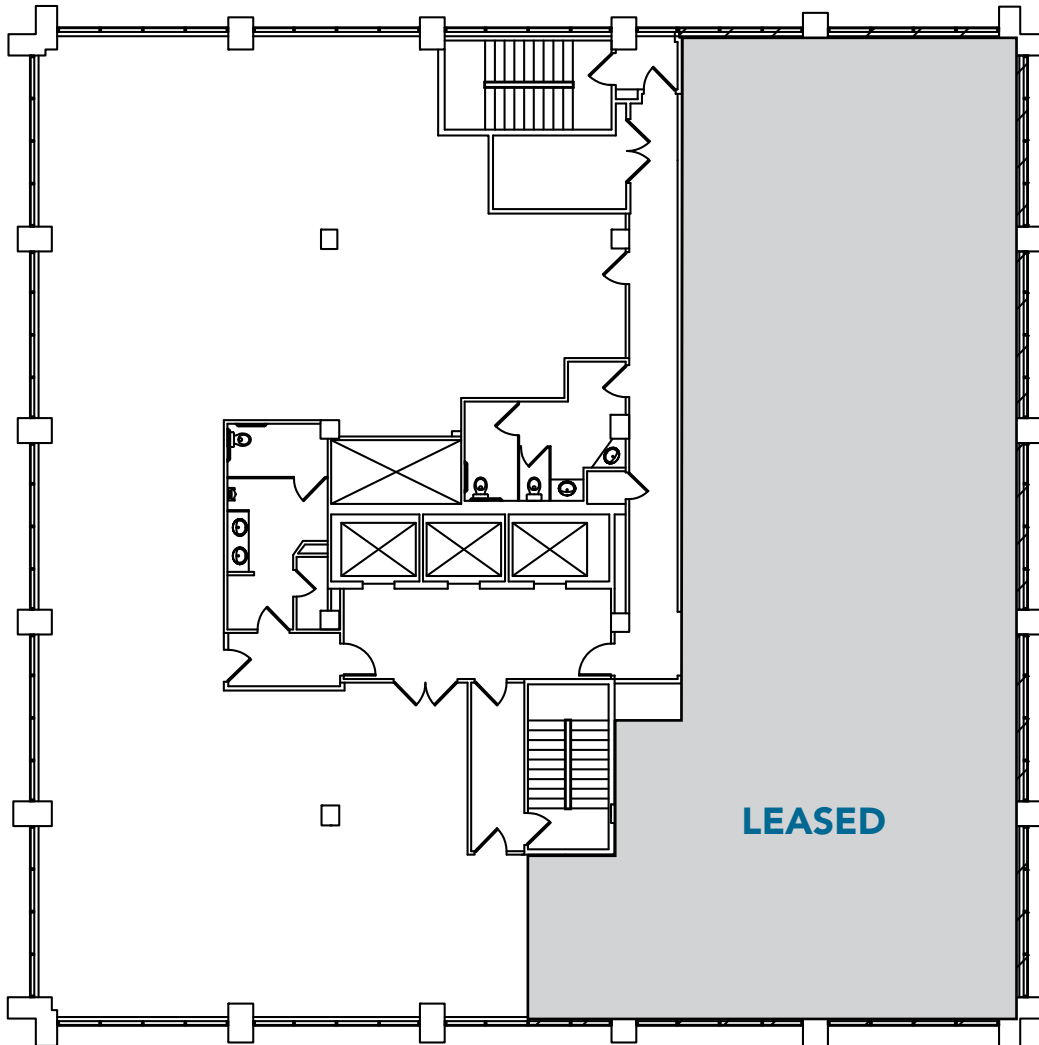
Kevin Duffy
Lic. 01032613
kevin.duffy@cbre.com
818.502.6724

© 2015 CBRE, Inc. This information has been obtained from sources believed reliable. We have not verified it and make no guarantee, warranty or representation about it. Any projections, opinions, assumptions or estimates used are for example only and do not represent the current or future performance of the property. You and your advisors should conduct a careful, independent investigation of the property to determine to your satisfaction the suitability of the property for your needs.

535 NORTH BRAND BOULEVARD GLENDALE, CALIFORNIA

SUITE 450 • ±4,661 RSF

Available: Immediately
Divisible to ±3,000 RSF.



FOR MORE
INFORMATION
PLEASE CONTACT:

CBRE

Equity Office

Matthew Heyn
Lic. 01306148
matt.heyne@cbre.com
818.907.4619

Troy Pollet
Lic. 01830817
troy.pollet@cbre.com
818.907.4620

Natalie Bazarevitsch
Lic. 01188604
natalie.bazarevitsch@cbre.com
818.502.6723

Kevin Duffy
Lic. 01032613
kevin.duffy@cbre.com
818.502.6724

© 2015 CBRE, Inc. This information has been obtained from sources believed reliable. We have not verified it and make no guarantee, warranty or representation about it. Any projections, opinions, assumptions or estimates used are for example only and do not represent the current or future performance of the property. You and your advisors should conduct a careful, independent investigation of the property to determine to your satisfaction the suitability of the property for your needs.

535 NORTH BRAND BOULEVARD GLENDALE, CALIFORNIA

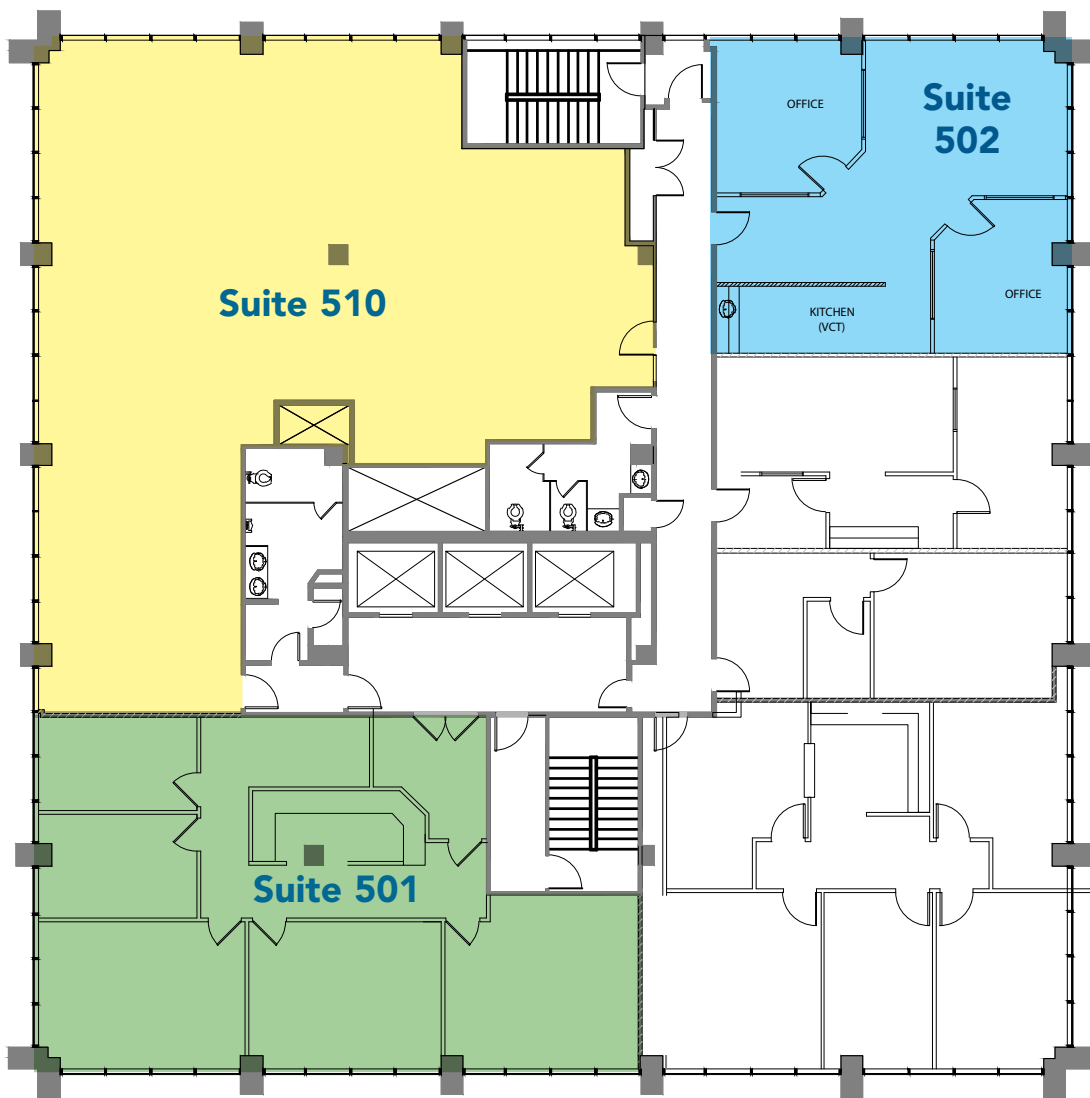
■ SUITE 501 • ±1,844 RSF

■ SUITE 510 • ±2,706 RSF

Available: Immediately
Contiguous to ±4,550 RSF.

■ SUITE 502 • ±1,098 RSF

Available: Immediately



FOR MORE
INFORMATION
PLEASE CONTACT:

CBRE

Equity Office

Matthew Heyn
Lic. 01306148
matt.heyne@cbre.com
818.907.4619

Troy Pollet
Lic. 01830817
troy.pollet@cbre.com
818.907.4620

Natalie Bazarevitch
Lic. 01188604
natalie.bazarevitch@cbre.com
818.502.6723

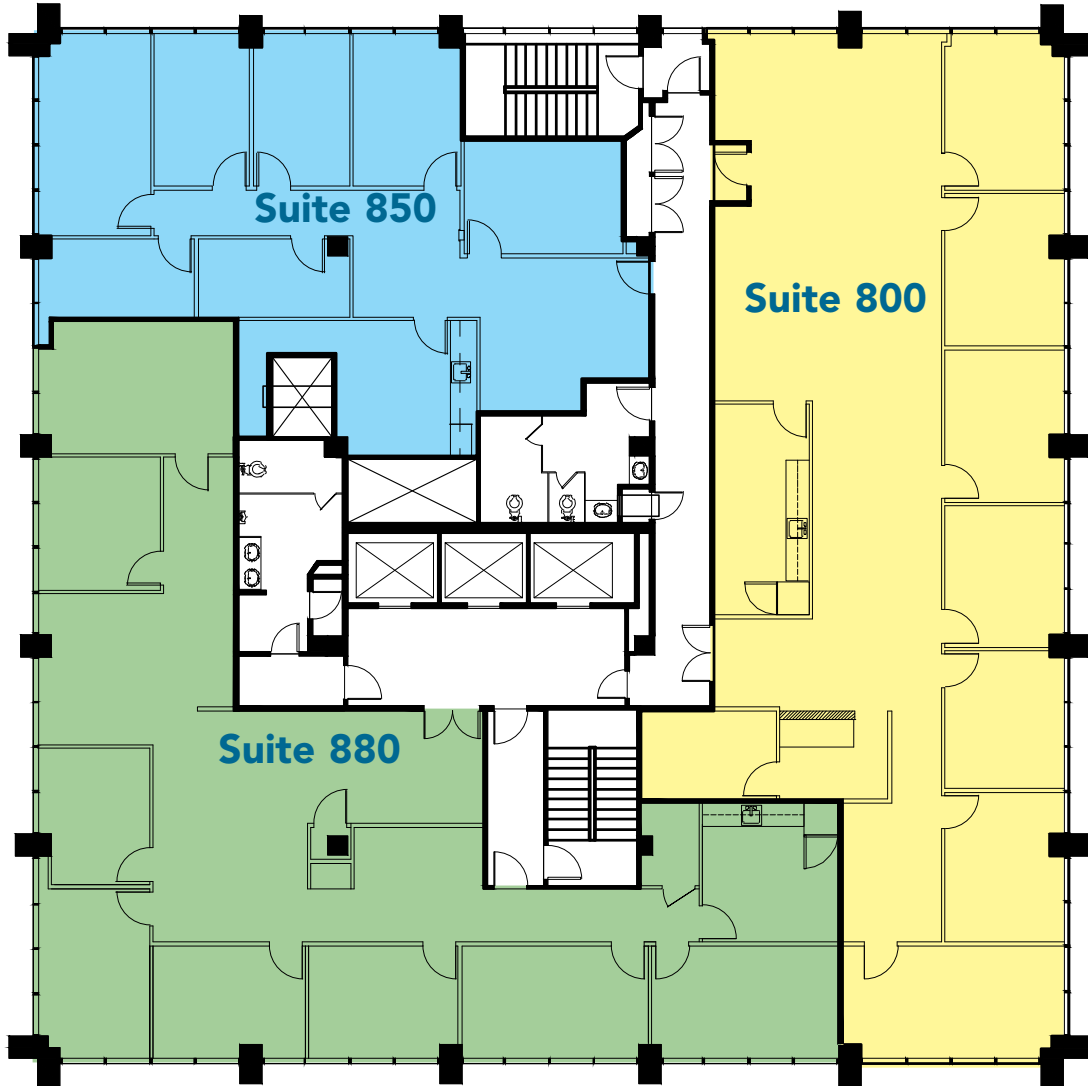
Kevin Duffy
Lic. 01032613
kevin.duffy@cbre.com
818.502.6724

© 2015 CBRE, Inc. This information has been obtained from sources believed reliable. We have not verified it and make no guarantee, warranty or representation about it. Any projections, opinions, assumptions or estimates used are for example only and do not represent the current or future performance of the property. You and your advisors should conduct a careful, independent investigation of the property to determine to your satisfaction the suitability of the property for your needs.

535 NORTH BRAND BOULEVARD GLENDALE, CALIFORNIA

- SUITE 800 • ±3,345 RSF
- SUITE 850 • ±2,071 RSF
- SUITE 880 • ±3,109 RSF

Available: Suite 800: 10/1/16, Suite 850: Immediately & Suite 880: 3/1/16
Contiguous to 8,525 SF



FOR MORE
INFORMATION
PLEASE CONTACT:

CBRE

Equity Office

Matthew Heyn
Lic. 01306148
matt.heyn@cbre.com
818.907.4619

Troy Pollet
Lic. 01830817
troy.pollet@cbre.com
818.907.4620

Natalie Bazarevitch
Lic. 01188604
natalie.bazarevitch@cbre.com
818.502.6723

Kevin Duffy
Lic. 01032613
kevin.duffy@cbre.com
818.502.6724

© 2015 CBRE, Inc. This information has been obtained from sources believed reliable. We have not verified it and make no guarantee, warranty or representation about it. Any projections, opinions, assumptions or estimates used are for example only and do not represent the current or future performance of the property. You and your advisors should conduct a careful, independent investigation of the property to determine to your satisfaction the suitability of the property for your needs.